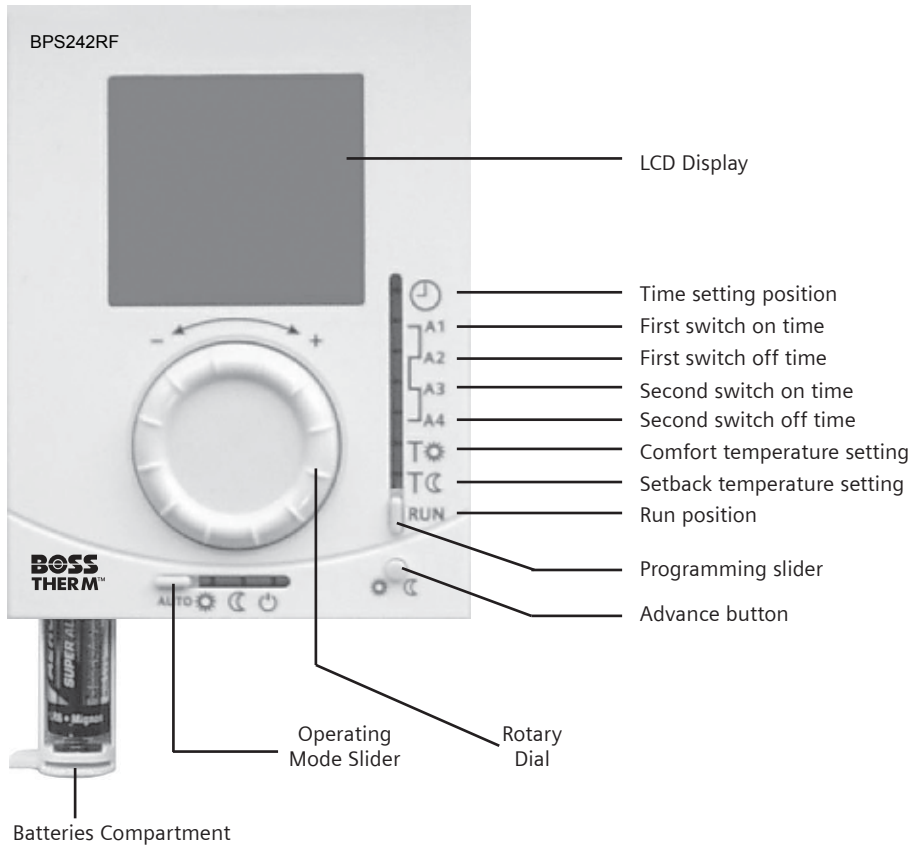


Programming and operating Instructions for the BOSS BPS242RF
Programmable Room Thermostat



Guide to symbols
On LCD Display

- Actual room temperature in °C
- The unit is controlling to the selected comfort temperature setpoint
- The unit is controlling to the selected setback temperature setpoint
- The unit is controlling to the standby temperature setpoint
- Indicates when the temperature setpoint has been moved from setpoint by user. This setpoint will operate until the next switching time. This is only active when the controller is in the run and automatic mode
- Automatic mode. The unit is controlling to the time and temperature programmes that have been selected
- Permanent comfort mode. The unit is controlling continuously to the comfort temperature setpoint.
- Permanent setback mode. The unit is controlling continuously to the setback temperature setpoint.
- Permanent standby mode. The unit is controlling continuously to the standby temperature setpoint.
- Indicates there is a call for heat
- Indication of low battery life, this signifies batteries must be replaced

Guide to symbols
on Operating Mode Slider

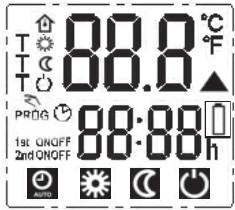
- AUTO** Automatic mode. The unit is controlling to the time and temperature programmes that have been selected
- Permanent comfort mode. The unit is controlling continuously to the comfort temperature setpoint.
- Permanent setback mode. The unit is controlling continuously to the setback temperature setpoint.
- Permanent standby mode. The unit is controlling continuously to the standby temperature setpoint. This setpoint is fixed at 5°C

Introduction.

This leaflet gives you easy to follow instructions on how to set up your BPS242RF programmable room thermostat.

Contents

- How do I set the time?
- How do I set the switch on & off times?
- How do I set the comfort temperature value?
- How do I set the setback temperature value?
- How do I temporarily change the current setpoint?
- What does the Advance button do?



To start the controller fit two “AA” batteries in the battery compartment. Once batteries are fitted all symbols will be displayed on the LCD screen as shown.

How do I set the time?

Set the programming slider to position

The current time setting flashes.
Turn the rotary dial to the left to decrease the time, or to the right to increase the time.
When the correct time is displayed move the programming slider to any other position to confirm your setting.

How do I set the switch on & off times?

Up to two on & off times can be set on the controller.

How do I set the first switch on time?

Set the programming slider to position A1. The setting for the current first on time flashes.
Turn the rotary dial to the left to decrease the time, or to the right to increase the time.
When the required on time is displayed move the programming slider to any other position to confirm your setting.

How do I set the first switch off time?

Set the slide mode switch to position A2
The setting for the current first off time flashes.
Turn the rotary dial to the left to decrease the time, or to the right to increase the time.
When the required off time is displayed move the programming slider to any other position to confirm your setting.

How do I set the second switch on time?

Set the programming slider to position A3. The setting for the current second on time flashes.
Turn the rotary dial to the left to decrease the time, or to the right to increase the time.
When the required on time is displayed move the programming slider to any other position to confirm your setting.



How do I set the second switch off time?

Set the slide mode switch to position A4. The setting for the current second off time flashes.
Turn the rotary dial to the left to decrease the time, or to the right to increase the time.
When the required off time is displayed move the programming slider to any other position to confirm your setting.

How do I set the comfort temperature value?

Set the programming slider to position

The setting for the current comfort temperature flashes.
Turn the rotary dial to the left to decrease the temperature setting, or to the right to increase the temperature setting.
When the required comfort temperature is displayed move the programming slider to any other position to confirm your setting.

How do I set the setback temperature?

Set the programming slider to position

The setting for the current setback temperature flashes.
Turn the rotary dial to the left to decrease the temperature setting, or to the right to increase the temperature setting.
When the required setback temperature is displayed move the programming slider to any other position to confirm your setting.

How do I temporarily change the current setpoint?

The current value of setpoint can be changed temporarily when the operating mode slider is in the AUTO position and the programming slider is in the RUN position. Turn the rotary dial slightly in either direction to display the current setpoint, then turn it to the left to decrease the temperature setting, or to the right to increase the temperature setting. This setpoint will operate until the next switching time. When this has been activated the hand symbol is displayed

What does the Advance button do?

This switches the operating mode from comfort to setback or vice versa until the next switching time.

Set the controller to the RUN position when all programming is complete

